

Request :  Quotation  Order

Name : .....

Date : .....

Address : .....

Debtor number : .....

Town + postcode : .....

Offer / Project number : .....

Country : .....

Delivery time : .....

Fax / Telephone number : .....

Price per piece / total : .....

## Bronze stern tube with dual shaft seal

diameter (D)	25 mm	30 mm	35 mm	40 mm	45 mm	50 mm
flange width (P)	25 mm	25 mm	28 mm	28 mm	31 mm	31 mm
Q (standard, maximum)	81 mm	95 mm	107 mm	121 mm	133 mm	147 mm
Q (minimum)	30 mm	30 mm	33 mm	33 mm	36 mm	36 mm

### Model 1 (Standard; stern tube with 1 cutlass bearing)

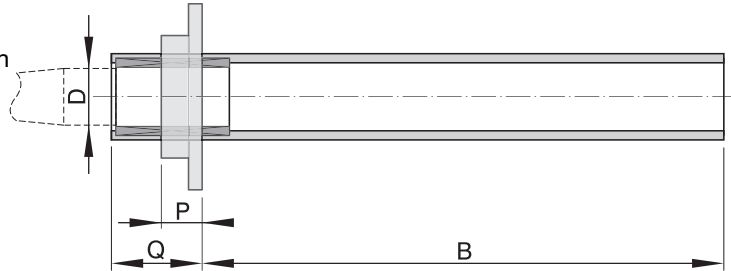
Diameter (D): Length (B):

- 25 mm (BL25/ )
- 30 mm (BL30/ )
- 35 mm (BL35/ )
- 40 mm (BL40/ )
- 45 mm (BL45/ )
- 50 mm (BL50/ )

Q is a standard dimension (see table). Otherwise:

Q =

Quantity:



### Model 2 (Stern tube with 2 cutlass bearings; 2nd bearing at the end of the tube) 2nd bearing art. code: BR2

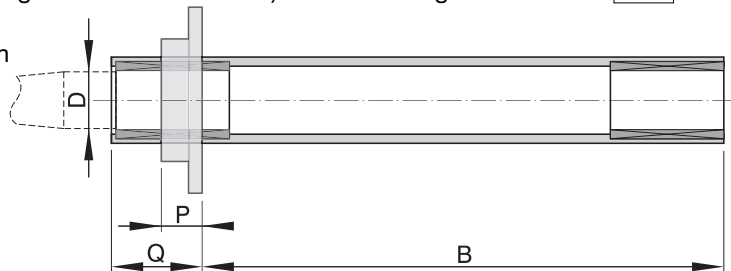
Diameter (D): Length (B):

- 25 mm (BL25/ )
- 30 mm (BL30/ )
- 35 mm (BL35/ )
- 40 mm (BL40/ )
- 45 mm (BL45/ )
- 50 mm (BL50/ )

Q is a standard dimension (see table). Otherwise:

Q =

Quantity:



### Model 3 (Stern tube with 2 cutlass bearings; 2nd bearing not at the end of the tube) 2nd bearing art. code: BR3 S

Diameter (D): Length (B):

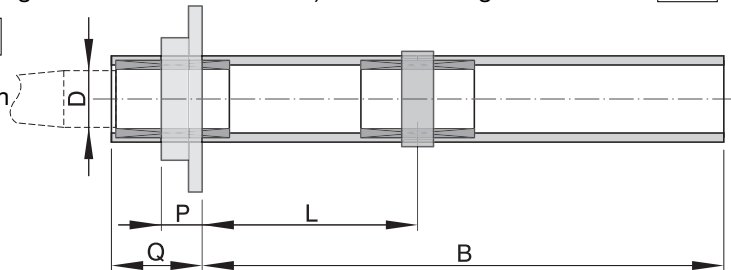
- 25 mm (BL25/ )
- 30 mm (BL30/ )
- 35 mm (BL35/ )
- 40 mm (BL40/ )
- 45 mm (BL45/ )
- 50 mm (BL50/ )

Bearing: L =

Q is a standard dimension (see table). Otherwise:

Q =

Quantity:



### Model 4 (Stern tube with 3 cutlass bearings) 2nd bearing art. code: BR2 3th bearing art. code: BR3 S

Diameter (D): Length (B):

- 25 mm (BL25/ )
- 30 mm (BL30/ )
- 35 mm (BL35/ )
- 40 mm (BL40/ )
- 45 mm (BL45/ )
- 50 mm (BL50/ )

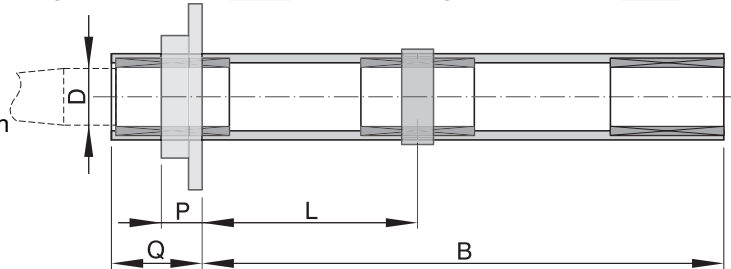
Intermediate bearing:

L =

Q is a standard dimension (see table). Otherwise:

Q =

Quantity:



Delivery : ex Schiedam, unpacked

Payment :  100% when ordered

50% when ordered, 50% on account/cash on delivery\*

\* delete as necessary

#### Faxnumbers:

+31 - (0)10 - 4621286

(Sales boat equipment Benelux)

+31 - (0)10 - 4152634

(Export boat equipment)