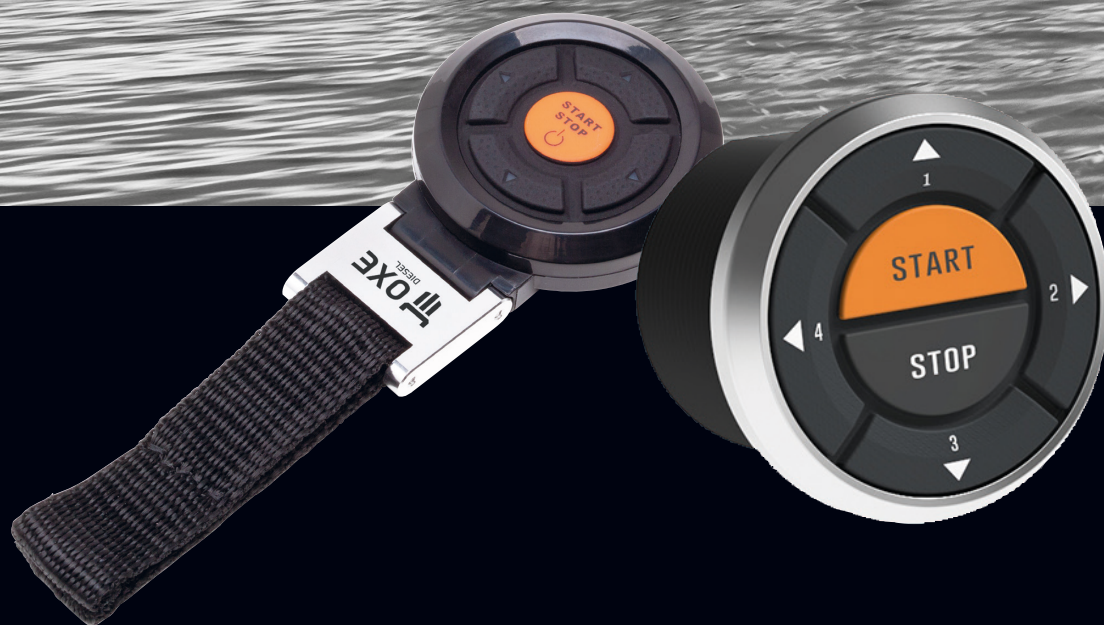




OXE

DIESEL



OXE **COASTKEY** SYSTEM

www.oxe-diesel.com

OXE COASTKEY SYSTEM



FUNCTIONS & TECHNICAL SPECIFICATION

OXE CoastKey System is an innovative multifunctional system that provides an engine start/stop remote controller and a wireless engine kill switch with available remote functions such as tilt, anchor windlass or thruster controls.

OXE CoastKey performs a crucial function by acting as an engine kill switch. When worn by the captain, it switches off the engine(s) within two seconds if he/she falls overboard. Traditional engine kill switches require the captain to be tethered to the helm. CoastKey provides a wireless connection, so you don't have to choose between comfort, freedom and safety.

PANEL UNIT



The Panel Unit is mounted in the console as a 52 mm instrument. It allows you to operate engine functions without the Remote Control Unit. The Panel Unit can start and stop up to 4 engines, and uses a PIN-code to unlock it.

REMOTE CONTROL UNIT



The Remote Control Unit is worn by the user, providing safety with its wireless kill switch, and convenience with its remote control functions for engine start/stop as well as tilt, windlass, thruster etc.

FUNCTIONS

- Start and stop up to 4 engines at once or individually
- A PIN-code unlocks the OXE CoastKey System and gives access to all functions. The PIN-code is set by the boat owner. (The Remote Control Unit overrides the PIN-code required to unlock the OXE CoastKey System from the Panel Unit)

FUNCTIONS

- Activates the OXE Coastkey System with the click of one button
- Wireless start/stop of engine(s) (Start <<All>> for twin, triple or quad installations)
- Wireless kill switch
- Auxiliary multi-function buttons for tilt, windlass, thruster etc.

TECHNICAL SPECIFICATION

- Designed as a 52 mm standard instrument
- 2.4 GHz radio and Bluetooth frequencies for software upgrades and system settings
- Waterproof - IP grade 67
- Tested according to the following standards: EN6050-1
EMC: EN 301 489-17 V3.1.1 Radio: EN 300 328 V2.1.1
FCC part 15.249, ISSED RSS-210

TECHNICAL SPECIFICATION

- 2.4 GHz radio with extended range
- Battery life expectancy: 700 - 800 engine operating hrs.
- Battery type - CR 2032
- Waterproof - IP grade 67
- Range: 6 - 10 meters from the steering helm

ENGINE UNIT

The Engine Unit, controlled by the Panel Unit, is connected to the electrical system on the boat with the supplied plug and play cable harness. The harness is easy to install on all major engine brands.

